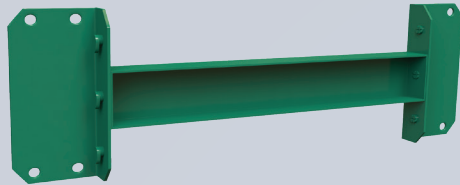


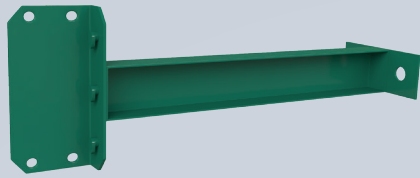
Accessories



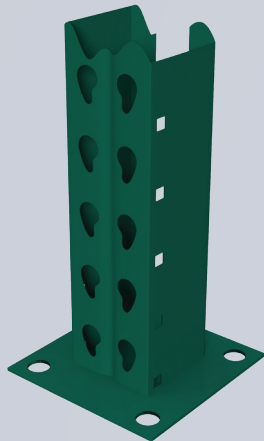
Row Spacer
Model Number: RS-Length



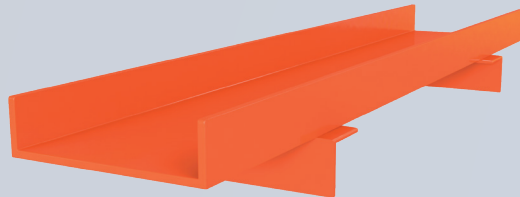
Rigid Row Spacer
Model Number: RRS-Length



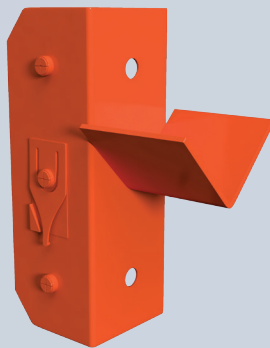
Heavy Duty Rigid Wall Tie
Model Number: RWT-Length



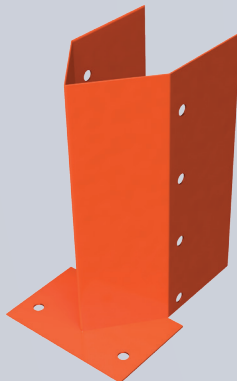
Heavy Duty Base Plates
Model Number: BP



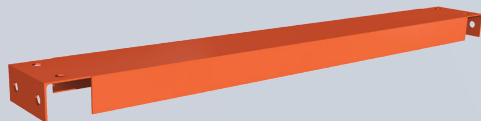
Skid Channel Standard Duty
Model Number: SC-Length



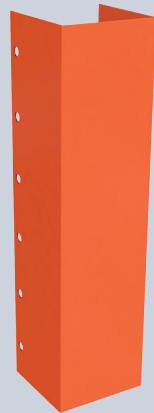
Real Holder
Model Number: RH



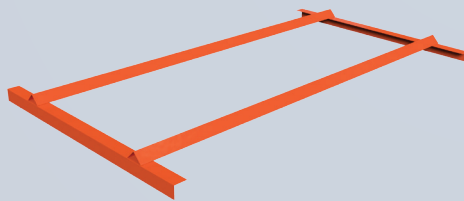
External Upright Column Protector
Model Number: CP-Lenght



Front to Back Support
Model Number: FB-Lenght



Column Splice Kit
Model Number: CSK-Lenght



Drum Bed Cradle
Model Number: DBC=Lenght

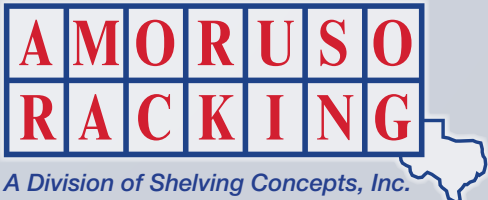
Pallet Rack Storage System



Pallet Rack Storage System



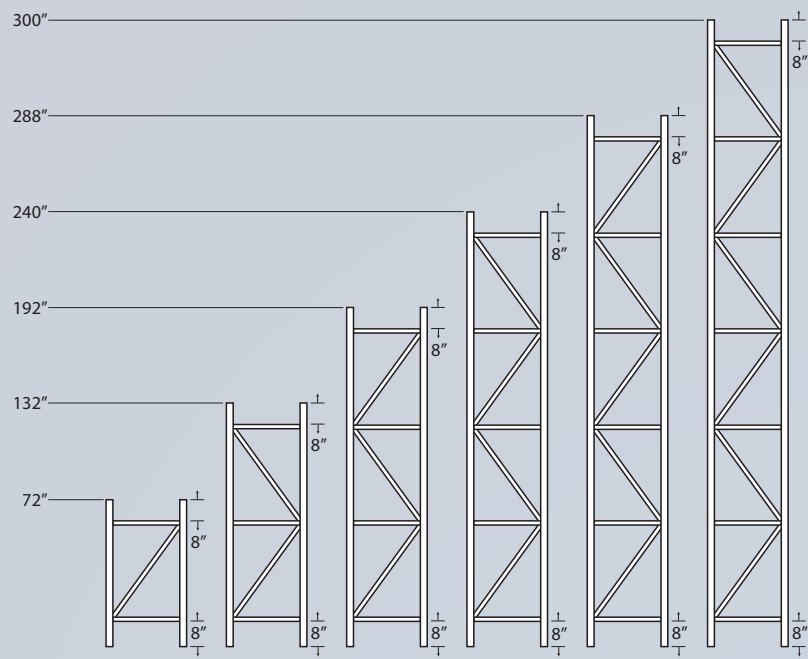
944 Fisher • Houston, Texas 77018 • 713.957.1111 • Fax: 713.957.1133 • 1-800-474.3531
www.amorusoracking.com



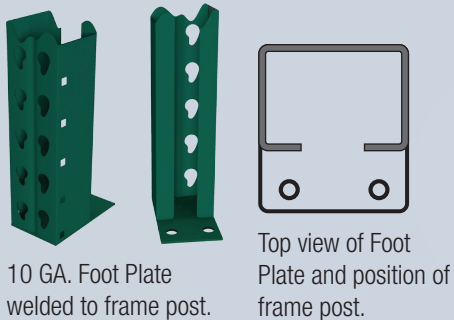
Today's Organization is Tomorrow's Profits

Frames

- Teardrop design - most popular industrial standard - offers 2” adjustability for most efficient height usage.
- Standard widths to 60” and heights to 300” to cover most storage applications.
- Height tensile steel columns and heavy channel bracing soundly welded together result in strong and reliable upright turss.
- Boltless design insures ease of assembly and adjustment.
- The finish is iron phosphated and is coated with powder coating to insure protection of rack components. Standard colors: Amoruso Green - frames, Safety Orange - beams.
- Weight capacities to 36,000 Lbs. capacities are based on 48” beam spacing.
- All rack components designed in accordance with requirements of Rack Manufacturers Institutes (RMI).



All frame have Foot Plates welded to the frame posts.
Each Foot Plate is 4½” x 3” x 10GA. and has two (2) 9/16” holes for securing frames to the floor.



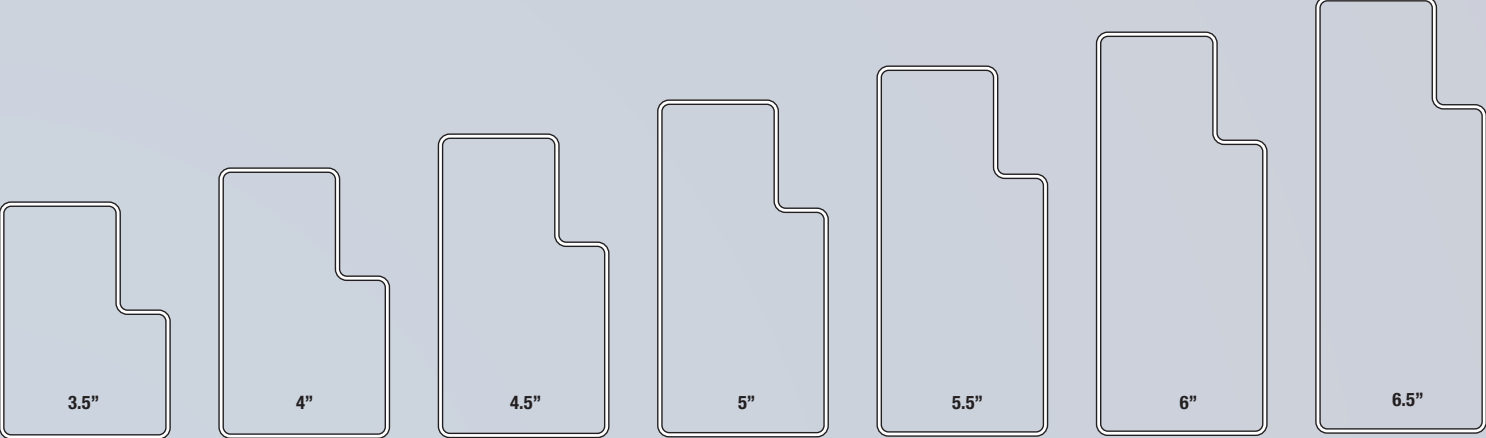
Notes:

- Frame capacities are for product load only.
- All capacities meet or exceed RMI standards.
- Seismic design is not included in this table.
- Unsupported Column Length is the distance from the floor to the top of the first beam or the distance from top of beam to top of beam, whichever is greater.
- Capacities are for undamaged frames.
- Consider using column protective devices with columns are exposed to fork truck traffic.
- F14 frames are restricted to 4000# per self level.

| Static Frame Capacity (No Seismic Consideration Given) <i>Please Consult a Racking Engineer for Seismic Capacities</i> | | | | | |
|--|---------------------------|-----------------------|-----------------------|----------------------|----------------------|
| Frame | Unsupported Column Length | F-14 3 x 1½ x 14ga | F-20 3 x 2½ x 14ga | F-24 3 x 3 x 14ga | F-30 3 x 3 x 13ga |
| 96” | 24” | 20,000 | 34,000 | 36,000 | 42,000 |
| | 48” | 15,000 | 29,000 | 31,000 | 36,000 |
| 120” | 24” | 20,000 | 35,000 | 36,000 | 42,000 |
| | 48” | 15,000 | 28,500 | 31,000 | 36,000 |
| 144” | 24” | 20,000 | 35,000 | 36,000 | 42,000 |
| | 48” | 15,100 | 28,500 | 31,000 | 36,000 |
| 168” | 28” | | 35,000 | 35,700 | 42,600 |
| | 48” | | 24,000 | 31,000 | 36,000 |
| 192” | 27” | | 35,000 | 35,500 | 42,000 |
| | 48” | | 24,000 | 31,000 | 36,000 |
| 216” | 31” | | 33,200 | 35,000 | 41,500 |
| | 48” | | 24,000 | 31,000 | 36,000 |
| 240” | 34” | | 31,000 | 35,000 | 41,500 |
| | 48” | | 24,000 | 31,000 | 36,000 |
| 264” | 33” | | 32,500 | 35,200 | 41,600 |
| | 48” | | 24,000 | 31,000 | 36,000 |

Cross Beams

- Beams are made of high strength steel, one piece construction welded for the strongest beam design
- The beams have heavy duty connector clips with a self-locking safety spring that automatically locks the beam in to place. Solid load bearing rivets secure the beams to the frame and the locking action increases as the load increases.
- Standard beams lengths are available to 144” long in many load capacities. Meets or exceeds RMI Standards.
- The allowable capacities pre beam pair is based on maximum deflection of the beam length divided by 180.
- Steel surface receive an iron phosphate coating and then are coated with powder coating safety orange to protect rack components.



| Beam Length | 3.5” | 4” | 4.5” | 5” | 5.5” | 6” | 6.5” |
|-------------|------|------|------|------|-------|-------|-------|
| 72” | 5770 | 6680 | 1420 | 9380 | 10000 | 10000 | 15000 |
| 84” | 4980 | 5790 | 6850 | 8110 | 9370 | 10000 | 15000 |
| 90” | 4460 | 5430 | 6420 | 7600 | 8780 | 9820 | 15000 |
| 96” | 4030 | 5030 | 6062 | 7160 | 8260 | 9230 | 14350 |
| 102” | 3490 | 4490 | 5710 | 6760 | 7810 | 8720 | 13530 |
| 108” | 3110 | 4040 | 5260 | 6420 | 7400 | 8260 | 12810 |
| 114” | | 3660 | 4750 | 6100 | 7040 | 7850 | 12170 |
| 120” | | 3330 | 4320 | 5630 | 6710 | 7480 | 11580 |
| 126” | | 3540 | 3940 | 5140 | 6850 | 7080 | 10950 |
| 132” | | 2800 | 3620 | 4710 | 5910 | 6780 | 10480 |
| 138” | | 2580 | 3330 | 4340 | 5440 | 6460 | 10040 |
| 144” | | 2400 | 3080 | 4020 | 5020 | 5970 | 9650 |

